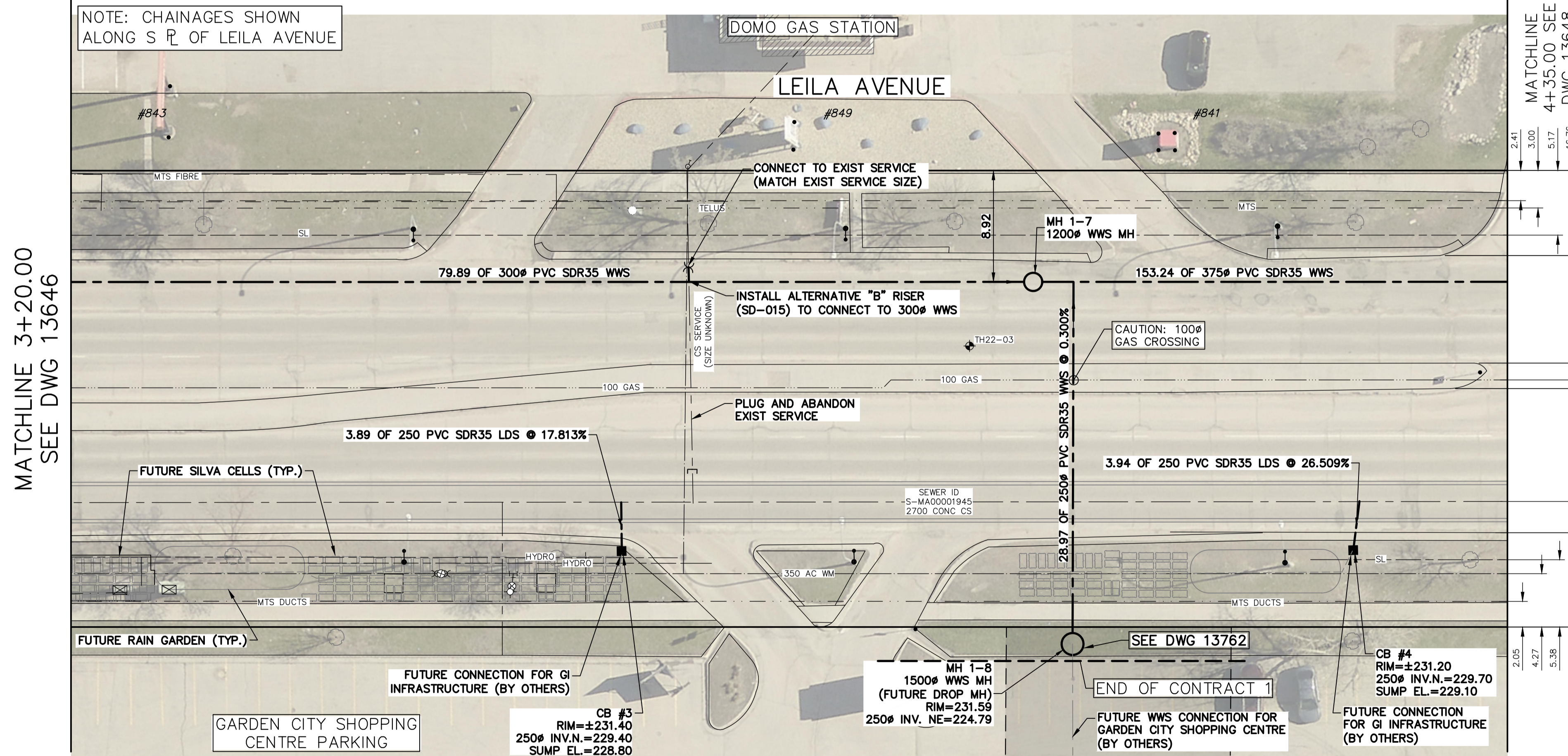


- NOTES:**
- WHEN INSTALLING PROPOSED WASTEWATER SEWERS ON LEILA AVE TAKE CAUTION WHEN CROSSING EXISTING WATER SERVICES.

SEWER JUNCTION INFORMATION FROM SEWER VIDEO INSPECTION			
SEWER ID S-MA00001945			
DISTANCE FROM MH ID S-MH00001868			
DISTANCE	DIAMETER	CLOCK	
106.8	150	2	
121.4	150	11	

SEWER SERVICE INFORMATION					
ADDRESS	STATUS	SIZE (mm) MATERIAL	COORDINATES AT JUNCTION	COORDINATES AT PROPERTY	REMARKS
#849 LEILA AVE	ACTIVE	UNKNOWN	N=5534967.59 E=633138.11	N=5534991.91 E=633148.96	NONE
#870 LEILA AVE	ACTIVE	150 UNKNOWN	N=5534974.14 E=633124.32	UNKNOWN	NONE



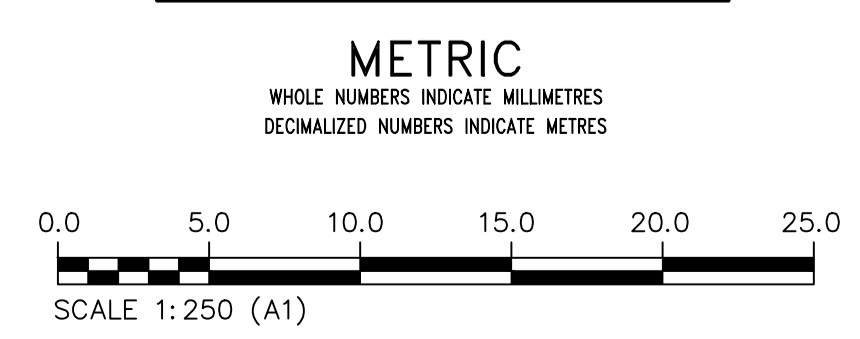
MATCHLINE 3+20.00 SEE DWG 13646

MATCHLINE 4+35.00 SEE DWG 13648

NOTE: CHAINAGES SHOWN ALONG S R OF LEILA AVENUE



FOR INDEX PAGE SEE DWG 13643



WARNING

IF POWER EQUIPMENT OR EXPLOSIVES ARE TO BE USED FOR EXCAVATION ON THIS PROJECT THE CONTRACTOR MUST:

- NOTIFY THE GAS COMPANY OF THE PROPOSED LOCATION OF EXCAVATION.
- TAKE PRECAUTION TO AVOID DAMAGE TO GAS COMPANY INSTALLATIONS.

SEE PROVINCIAL REGULATION 210/72 FOR DETAILS

LOCATION APPROVED UNDERGROUND STRUCTURES

SUPV. U/G STRUCTURES COMMITTEE DATE

NOTE:

LOCATION OF UNDERGROUND STRUCTURES AS SHOWN ARE BASED ON THE BEST INFORMATION AVAILABLE BUT NO GUARANTEE IS GIVEN THAT ALL EXISTING UTILITIES ARE SHOWN OR THAT THE GIVEN LOCATIONS ARE EXACT. CONFIRMATION OF EXISTENCE AND EXACT LOCATION OF ALL SERVICES MUST BE OBTAINED FROM THE INDIVIDUAL UTILITIES BEFORE PROCEEDING WITH CONSTRUCTION.

VERTICAL DATUM: CGVD28 (HT2.0 Geoid)	
HORIZONTAL DATUM: NAD83 (June 1990), Zone 14	
DESIGNED BY	MID
CHECKED BY	TLE
DRAWN BY	GEL
APPROVED BY	RBO
SCALE:	
HORIZONTAL:	1:250
VERTICAL:	1:50
ISSUED FOR CONSTRUCTION	2026/03/10
DATE	DATE
NO.	REVISIONS
	(YYYY/MM/DD)
	BY
	DATE

KGS GROUP	
DESIGNED BY	MID
CHECKED BY	TLE
DRAWN BY	GEL
APPROVED BY	RBO
SCALE:	
HORIZONTAL:	1:250
VERTICAL:	1:50
ISSUED FOR CONSTRUCTION	2026/03/10
DATE	DATE
NO.	REVISIONS
	(YYYY/MM/DD)
	BY
	DATE

ENGINEER'S SEAL

ORIGINAL DRAWING SEALED BY:
M.A. IANKOVA-DEDOVA
2026/03/11

CONSULTANT DRAWING NUMBER
C1-06

THE CITY OF WINNIPEG
WATER AND WASTE DEPARTMENT
ENGINEERING SERVICES DIVISION

ARMSTRONG SEWER RELIEF WORKS
CONTRACT 1
LEILA AVENUE
221.4 E OF McPHILLIPS STREET TO
132.7 W OF GARDEN PARK DRIVE

SHEET 6 OF 46
CITY DRAWING NUMBER
13647